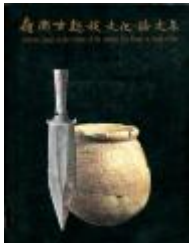


CFCCA Archive & Library Record Summary



Identifier: F.CHHW.25.AYP

Name: Collected Essays on the Culture of the Ancient Yue People in South China / Chau Hing-wah (eds.)/ Hong Kong : the Urban Council : 1993

Title and Statement of Responsibility

Collected Essays on the Culture of the Ancient Yue People in South China / Editor: Chau Hing-wah; Assistant Editors: Lee Mei-wah, Mabel Chu Chi-fu; Graphic Design: Li Kwok-ching, Dennis Chan Wui-yuen; Photography: Leung Kai-tong; Printing: Friendship Printing Co. Ltd

Creator(s)

Access status: On site

Edition Statement:

Publication Statement

Hong Kong : the Urban Council, Hong Kong , 1993

Scope and Content

Research publication examining the Culture of the Ancient Yue People in South China, published on the occasion of the exhibition: *Archaeological Discoveries of Ancient Yue People in South China* held between 1993 Nov 27 - 1993 Feb 20. Jointly presented by the Urban Council, Hong Kong, the Shenzhen Museum and the Anthropological Museum, Zhongshan University. (240 pages 228 paintings)

Conditions on Access

This publication is available in the esea ResearchLab for non-commercial private research use.

Related Content

Related People and Organisations

[Zhang Zhenzhong, artist](#) (has contributor)

[Au Ka-fat, artist](#)

(has contributor)

[Urban Council, Hong Kong, \(1883-1999\)](#) (is related to)

[Hong Kong Museum of History, \(1975-\)](#) (is related to)

[Shenzhen Museum](#) (is related to)

Related places

[Hong Kong](#) (is related to)

[Hong Kong](#) (has place of publication)

Related Events

Notes

Rules:

Our archival collections have been catalogued following the International Standard of Archival Description (ISAD(G)) and principles of Records in Context (RiC). The library collection has been documented following the Functional Requirements for Bibliographic Records (FRBR) standard and the International Standard for Bibliographic Description (ISBD).

Subject terms for the collections have been taken from the Resource Description Access (RDA) values which are made available under a Creative Commons Attribution 4.0 International License; the National Archives' PRONOM online registry of technical information; IANA media types. MIME types; Art & Architecture Thesaurus (AAT)® and Thesaurus of Geographic Names (TGN)® which are made available under the ODC Attribution License.